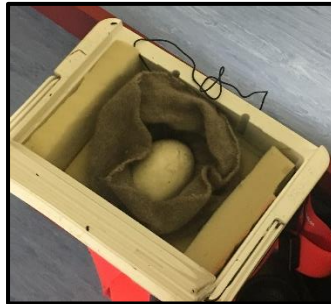


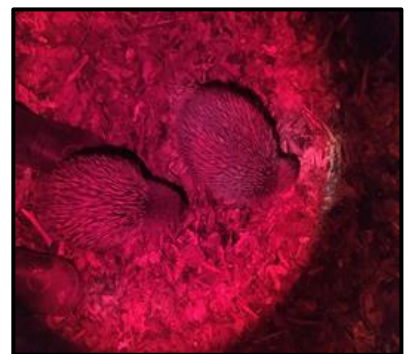
OUR FIRST EGG HAS ARRIVED!

Eggs Incubating	1
Chicks Hatched	0
Rowi in Nocturnal House	2



Our first egg for the season (2017/18) has arrived, and we have started off with a bang! Its been a pretty mild winter over the last couple of years, which has meant that some our birds are breeding a little earlier than usual. The winning streak continues for our pair "Boof" (male) and "Snatch" (female), who have been the first pair to breed for the last couple of years. This gorgeous pair have produced many healthy little chicks, and we are very excited to meet their new addition. Our beautiful egg arrived on the 20th July, at 32 days of incubation. It was uplifted on the same day by our wonderful rangers Anya and Iain from DOC. The gorgeous egg weighed 414.1g and is settling in well in its new artificial environment. The egg is expected to hatch around the 4th September. In the meantime we are 'egg-erly' awaiting for more eggs to join this little one. We have had news that the latest Skyrainger flight has detected a further 6 nests out there in Okarito! So wont be long till this egg has some company!

Our Nocturnal House birds are also growing up very fast. At 5 months of age our wee little fluffballs Dawn and Dusk are stomping around the nocturnal house like little dinosaurs being very inquisitive of everything in there. They will even come up to our rangers boots at times to come and see what they are up to. Its not long until these guys are off on their next adventure, and our Nocturnal House is occupied with some new chicks. So make sure you come in and see these two before they depart!



We welcomed back an old face of WCWC for a brief visit. This is Katie Gibb holding Dawn for her health check. These birds get checked regularly to make sure they are healthy.